

# NORTH OGDEN

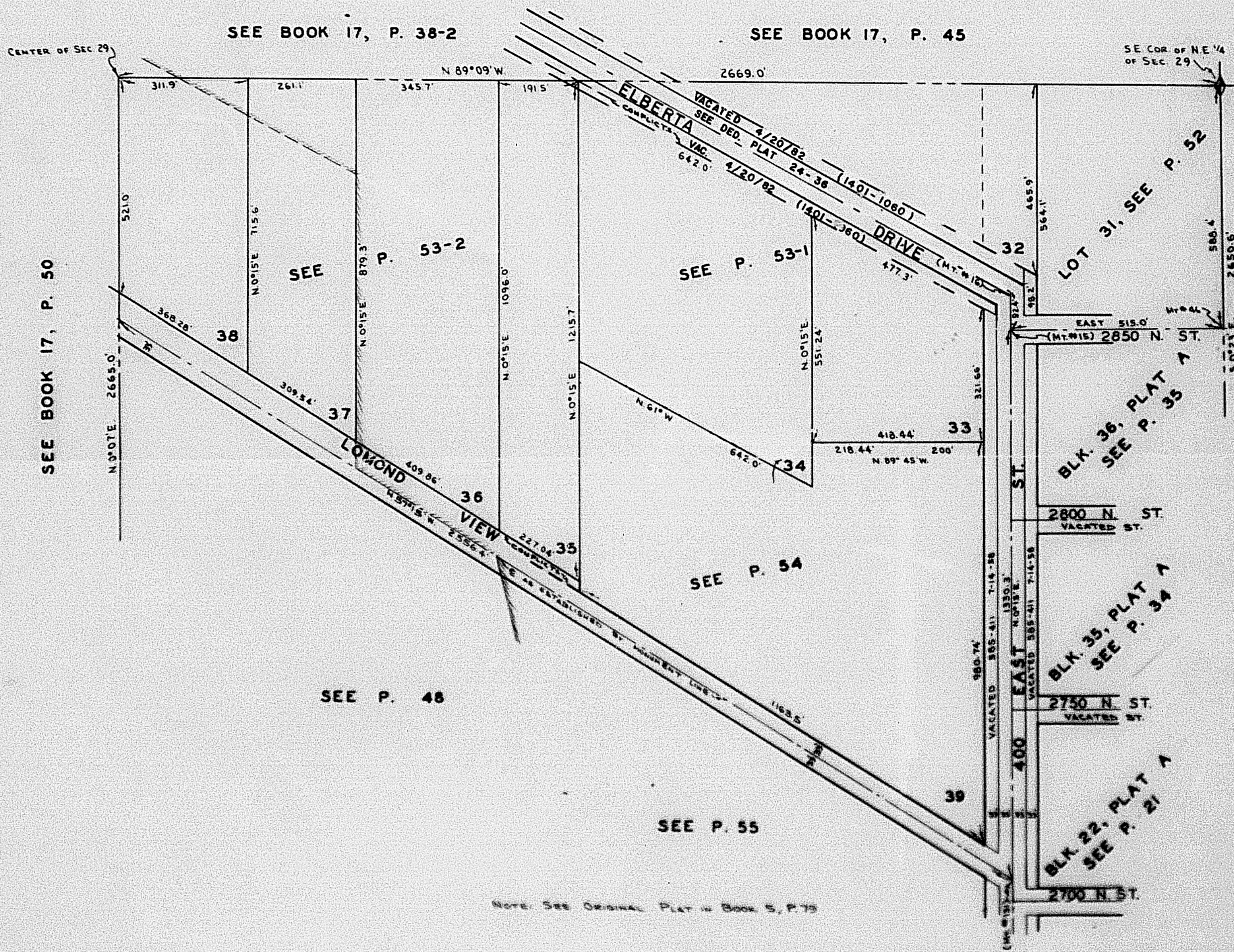
## LOTS 32 TO 38, PLAT "B"

IN NORTH OGDEN CITY & NORTH OGDEN DISTRICT

TAXING UNIT: 03, 10

SCALE 1" = 200'

PREFIX: 18-053  
ALSO SEE P. 53-1, 53-2



NOTE: SEE ORIGINAL PLAT IN BOOK 5, P. 75